

LCD Professional Monitor

P Series Anti-Glare Monitor

INTRODUCTION

Professional LCD display adopts LED full-array backlight panels, with more delicate image quality and clearer definition. Independently developed ultrathin board design let body more lightweight,. Ultra-narrow aluminum frame design Its great heat dissipation function guarantees the 7x24 hours of continuous work, which is widely used in advertising, video conferencing, classroom and other industries.



FEATURES

- Single display applications of large sizes, 43" 50" 55", 65",75",86",98",110";
- Professional grade LCD displays with LED backlit with lifespan 100,000hr;
- FHD 1920x1080 & Ultra HD 3840x2160 display resolution makes perfect and vivid picture;
- Aluminum frame with narrow bezel 27.3mm & bezel colors customized available;
- PC expansion slots, easy to input/output the audio video signal;
- With the smart power energy saving function, the stand-by power consumption can be 0.5W;
- Designed for 24/7 usage;



P Series

FEATURES IN DETAIL



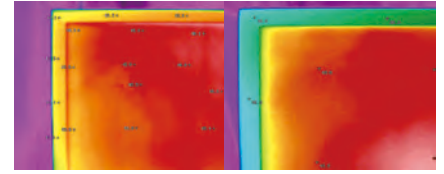
High Brightness

iSEMC's professional display have a higher level of brightness than that of normal LCD displays, making images appear more vivid even in bright environments, life like details remain visible and clear.



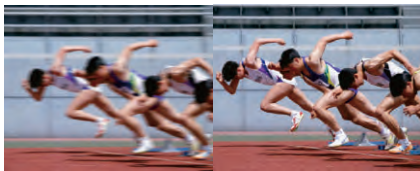
High Contrast Ratio

iSEMC's professional displays have higher contrast ratio than those of a normal television, which can enrich the depth and realism of the image.



Contrasted With The Front Frame

The temperature of screen and front frame tested by thermal imager is dropped 7.6 degrees by modifying the air ducts and fans.



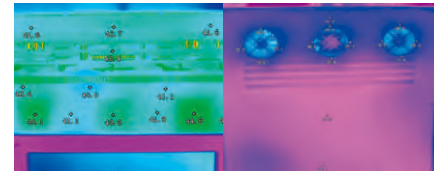
Gray Scale Response Time

With a gray scale response time of less than 8ms, it effectively enhances the moving image's display effect, and eliminates the problem of smear marks, thus presenting the images more smoothly.



Wider View Angle

With a viewing angle extending more degrees (both vertically and horizontally), it provides the audience with the option of simultaneous viewing and can be used to meet a variety of different viewing needs.



Test Comparison

The temperature of the back-case (at the fan) is dropped 10.2 degrees by modifying the air ducts and fans.

Wide Range Of Applications

Widely used in exhibition centers, trading centers, auction centers, financial centers, information centers, securities, telecommunications, taxation, power supply, customs, courts, airports, docks, talent markets, etc.

SPECIFICATIONS

Model		P43	P49	P55	P65	P75	P86	P98	P110
Display Parameters	Screen Size	43"	49"	55"	65"	75"	86"	98"	110"
	Backlight Type	ELED			DLED				
	Anti-Glare	/	/	Support (Option)					
	Aspect Ratio	16:9							
	Native Resolution	1920(RGB)x1080,FHD	1920(RGB)x1080,FHD 3840(RGB)x2160, UHD		3840(RGB)x2160, UHD				
	Frame Frequency	60Hz							
	Brightness	350cd/m²(Typ.)	350cd/m²(Typ.)	450 cd/m²(Typ.)	350cd/m²(Typ.)		400 cd/m²(Typ.)		450 cd/m²(Typ.)
	Contrast	1200:1(Typ.)							
	Viewing Angle	178°							
	Display Area (HxV)	940.58mm X528.8mm	948.4mm X615.1mm	1209.6mmx680.4mm	1428.48mmx803.52mm	1649.66mmx927.936mm	1895.04mmx1065.96mm	2158.85mmx1214.35mm	2436.48mmx1370.52mm
Interface	HDNI IN	1	2	x4					
	VGA IN	1	1	x1					
	VGA Audio IN		1	x1					
	AV IN			x1					
	AV OUT			x1					
	Earphone		1	x1					
	Spdif			x1					
	RS232		1	x1					
	USB(Media)	1	1	x1					
	Touch USB		1	x2					

Audio	Sound Power	8Ω/5Wx2	8Ω/5Wx2	8Ω/5Wx2	8Ω/15Wx2+8Ω/20W(Optional subwoofer)				
Power Supply	Powered By	AC110-240V 50/60Hz	AC110-240V 50/60Hz	AC100-240V 50/60Hz	AC100-240V 50/60Hz	AC100-240V 50/60Hz	AC100-240V 50/60Hz	AC100-240V 50/60Hz	AC100-240V 50/60Hz
	Maximum Power Consumptio	100W	130W	100W	200W	265W	380W	503W	720W
	Standby Power Consumptio	0.5W							
Working Environment	Temperature	0~50℃							
	Humidity	10 ~ 90%, Non-Condensing							
Exterior	Shell Material (Face Frame/Rear Shell)	Aluminum Profile/Sheet Metal							
	Shell Color (Face Frame/Rear Shell)	Black							
Dimensions	Packaging Size	(WxHxD) 1085mmx705mmx160mm	(WxHxD) 1230mmx760mmx160mm	(WxHxD) 1345mmx850mmx150mm	(WxHxD) 1648mmx962mmx223mm	(WxHxD) 1870mmx1087mmx223mm	(WxHxD) 2116mmx1226mmx223mm	(WxHxD) 2366mmx1405mmx253mm	(WxHxD) 2635mmx1635mmx300mm